

CERTIFICATE OF LOCATION OF GOVERNMENT CORNER

NORTHEAST Corner of Section 22, Township 107, Range 43, 5TH P.M.

STATE OF MINNESOTA, County of MURRAY

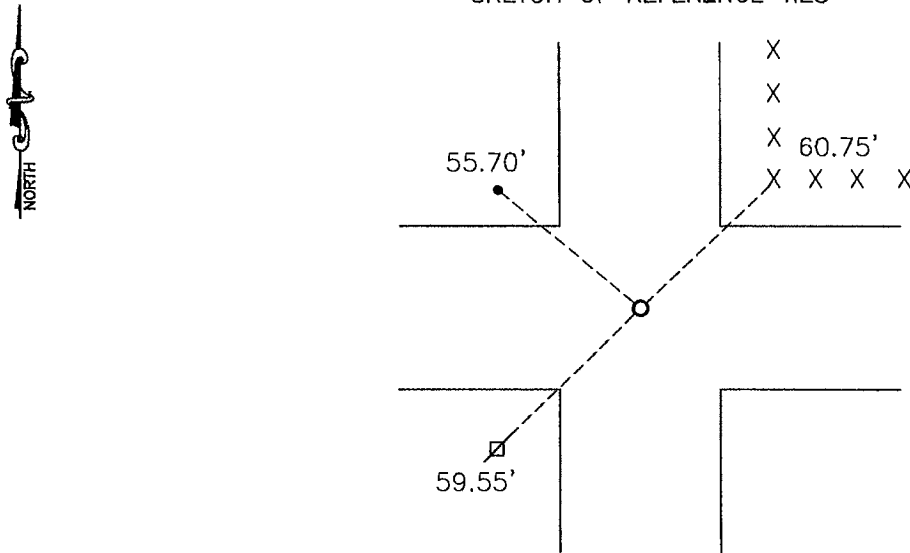
At the corner location shown on the sketch:

On 06-04-2008 found a RAILROAD SPIKE
DATE

left monument as found, lowered monument, removed monument (explain)

On 06-04-2008 placed a SURVEY SPIKE WITH SEAL #43844
DATE

SKETCH OF REFERENCE TIES



Minnesota State Plane Coordinate
System Murray County Datum
NAD83 (1996)
N: 179589.054
E: 442874.910

PK nail in power pole SW 59.55'
Nail and seal in corner fence post NE 60.75'
3/8" iron NW 55.70'

Statement of evidence relative to this corner location is on back of page.

I hereby certify that this document and the data contained herein was prepared by me or under my direct supervision.

James V. Johnson 1/26/09
SIGNATURE DATE

Registration No. 43844

Land Surveyor, Professional Engineer
 County Surveyor, County Engineer

OFFICE OF THE COUNTY RECORDER
County of

I hereby certify that this document was filed in the Co. Recorders office at _____ .M on the _____ day of _____ A.D. 20 _____

County Recorder *James V. Johnson*
By _____, Deputy

DOCUMENT NO. JUL 10 2009

Statement of Evidence

In 1866, J. W. Bishop did the original subdivision of the township.

In 1985, the Murray County Highway Department found an iron over a field stone. They set a PK nail after the road was rebuilt.

On June 4, 2008, Bueltel-Moseng Land Surveying found a PK nail we removed it and dug and found a railroad spike. We found nothing else and accepted the railroad spike and set a survey spike with seal #43844 over it.